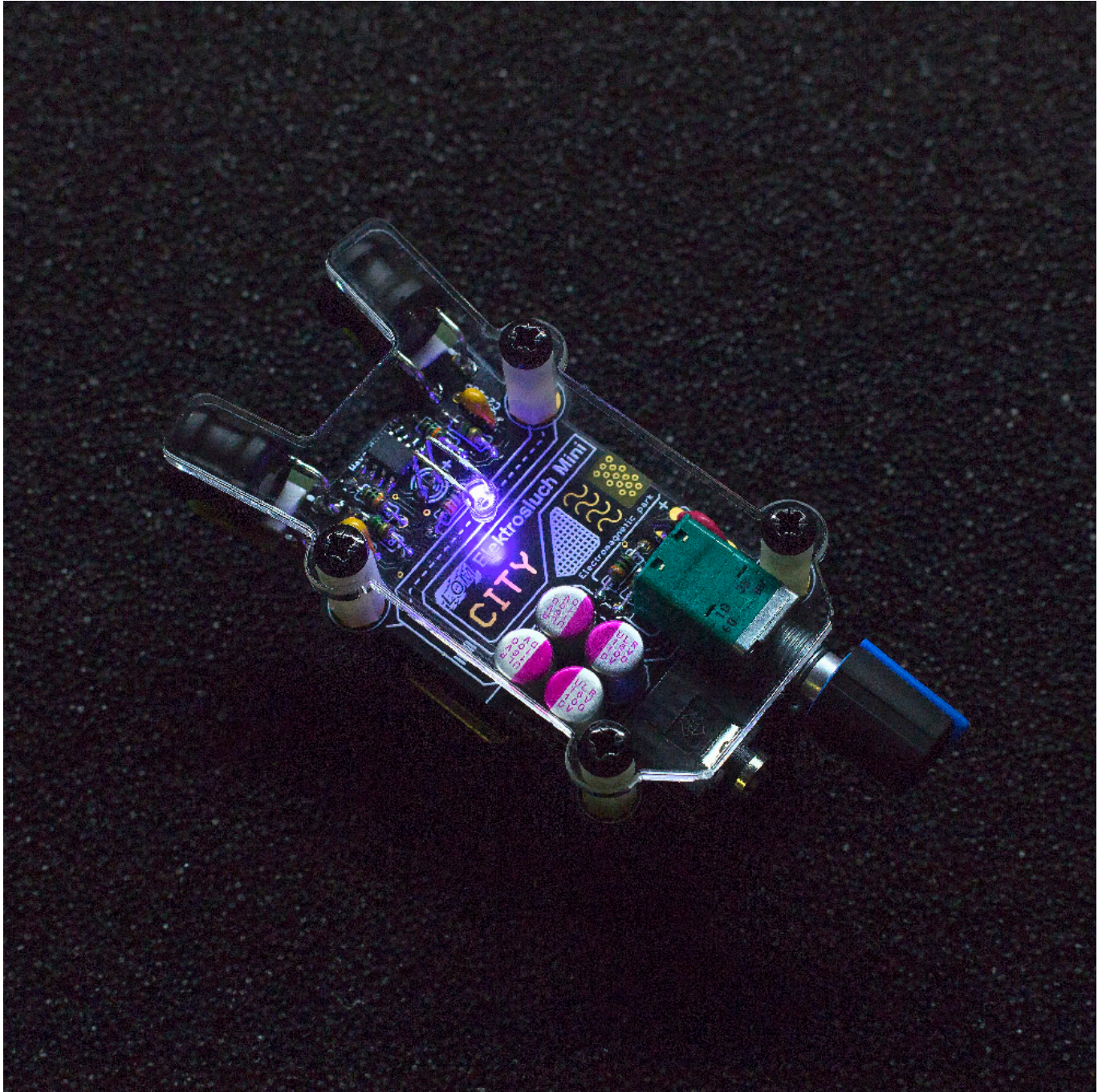


Building Elektroschluch Mini City

Updated 2. 10. 2017: Step 17



Introduction



Important notice: This kit requires skill and experience with soldering. We are providing it "as is". We are confident it will work, when properly constructed according to the published design. We will not be able to help you with bad soldering jobs or other errors based on an insufficient standard of assembler workmanship.

Please do not attempt to construct the project if you do not fully understand it, or if you



do not feel completely confident that you can build the project without further assistance.

If you never soldered before, we highly recommend watching these videos before you start with the kit. [Soldering Tutorial Part by EEVblog Part 1 & Part 2](#)

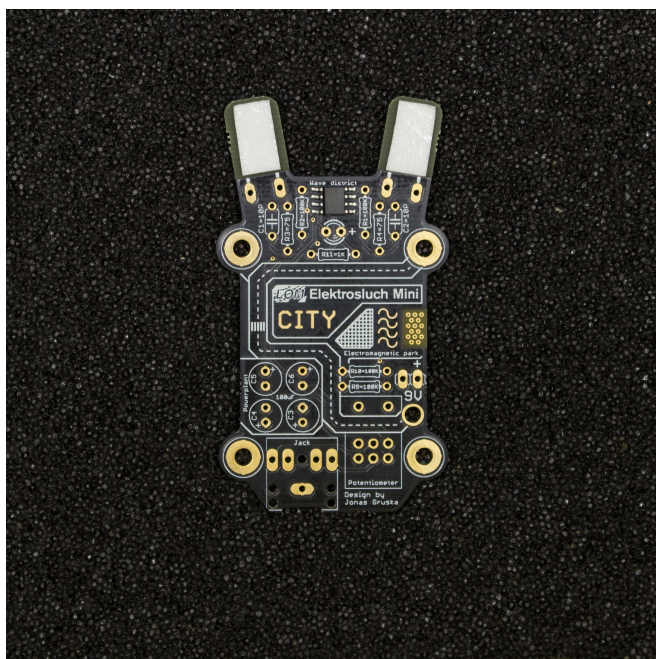
You can check the [schematic](#) on our github, if you need to.

Required tools

For assembly of the Elektrosluch Mini City DIY kit you will need:

- a soldering iron (at least 20 W or better)
- solder (ideally 60/40, 0.75mm)
- side cutters
- screwdriver

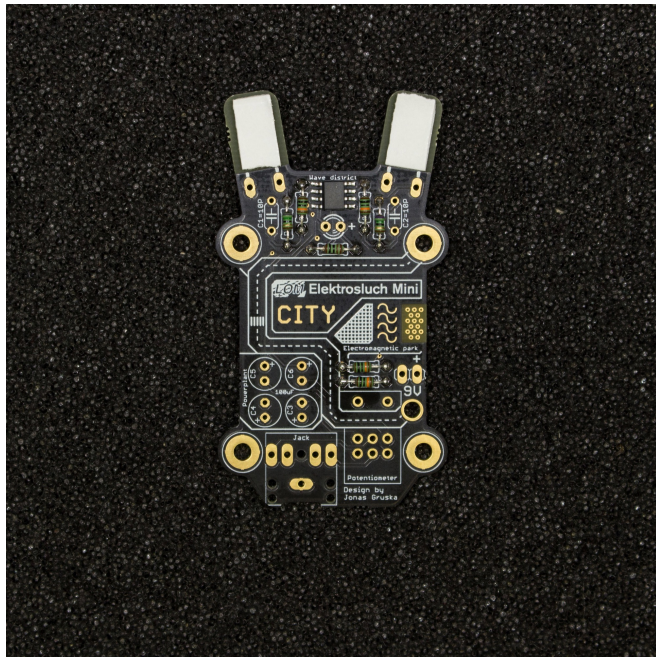
Building guide



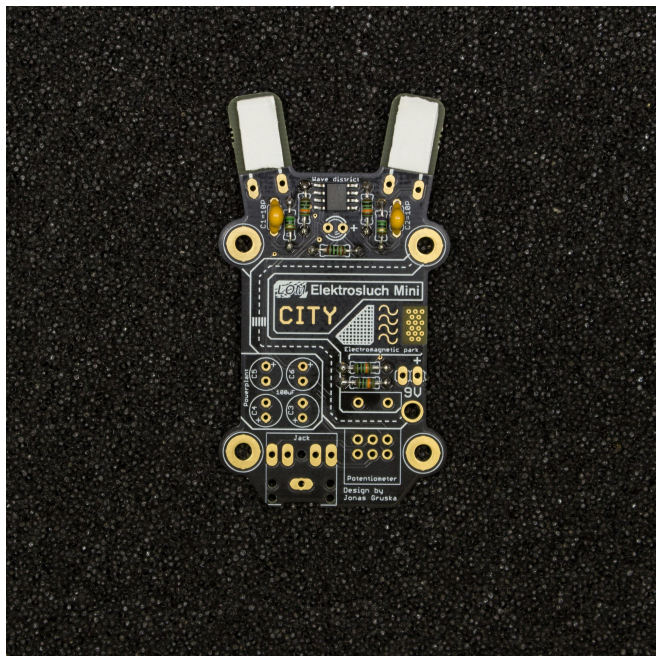
1. **Examine the printed circuit board.** You can see that it is covered with markings, indicating the correct placement of the components. During this tutorial, you will be mostly placing components (from the top side!) in the correct places and soldering them from the underside of the circuit board. After each soldering stage, you can cut off the leads of the components with side cutters, so they're not in the way.

2. It is best to **start soldering the shortest components first** and then move on to the larger ones. After you place the component legs through the holes, it may be handy to bend them in such a way that it won't fall out when the board is flipped over for soldering.

Our tutorial starts with resistors. Solder them all in their unique locations, according to the marks

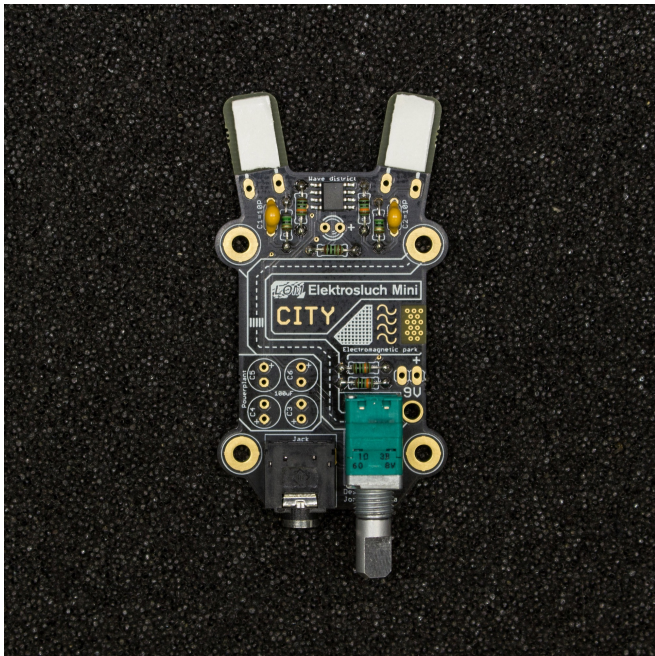
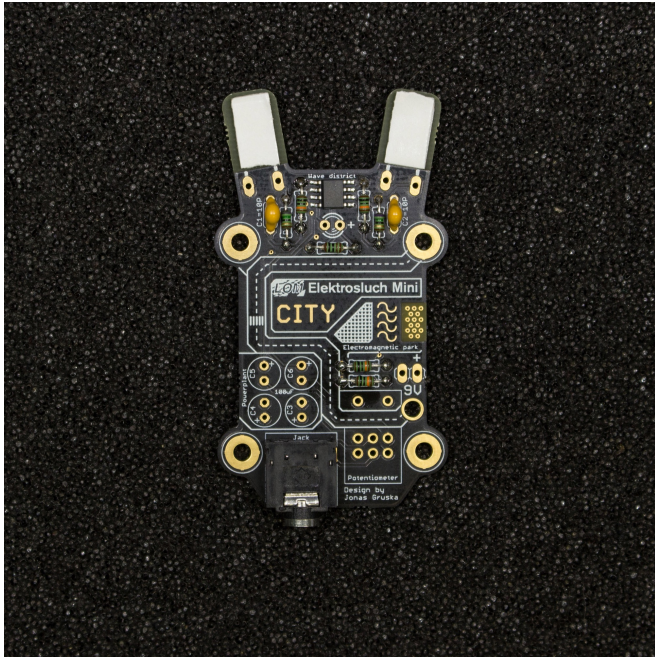


on the circuit board.



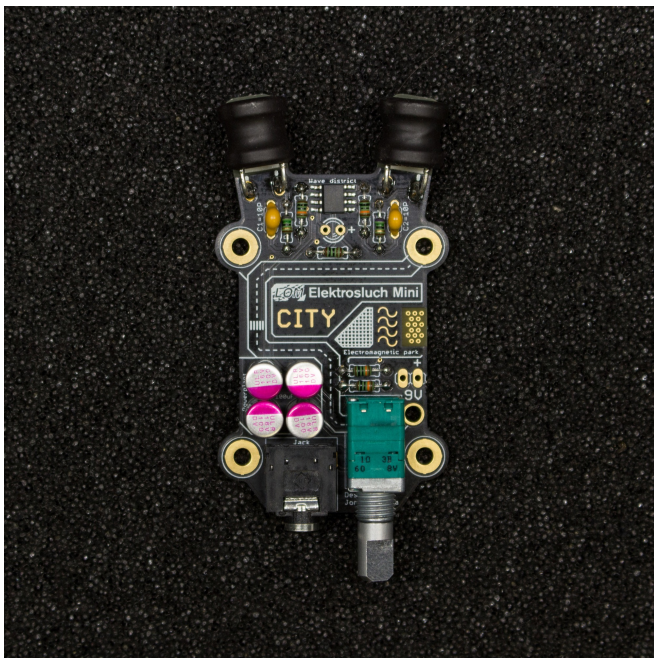
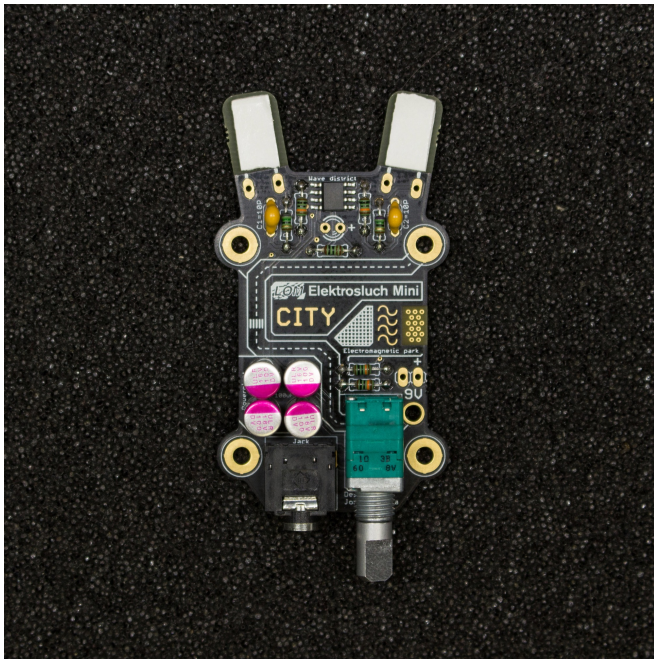
3. Continue with the yellow **ceramic capacitors** marked as 100 (10 pF). These will help to protect the circuit from very high frequencies beyond the audible range and oscillations. These are not polarity sensitive.

4. The next in line is the **jack connector**.



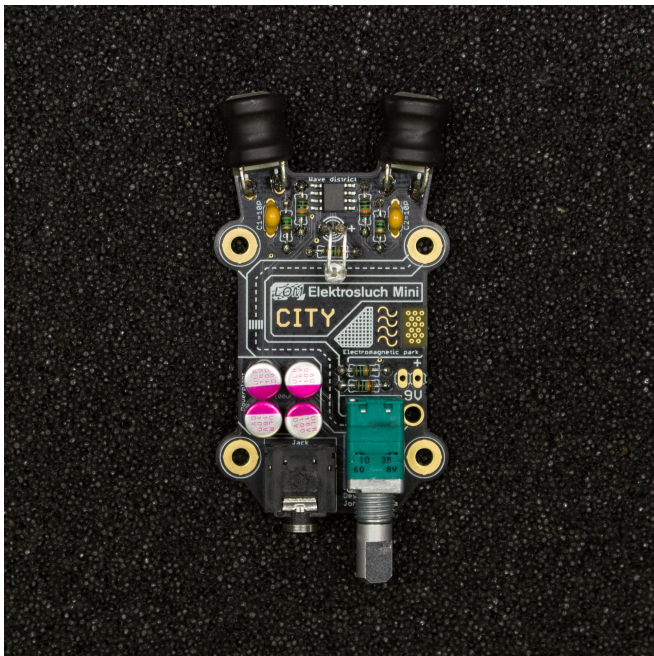
5. Push the **potentiometer** onto the board until it snaps into place and solder it in.

6. **Solder in the four polymer capacitors.** Beware of their polarity, minus (-) is marked by the pink color stripe and plus (+) is marked on the circuit board! Double check you are soldering them in correctly, it isn't easy to desolder them. You can use the photo as a reference.



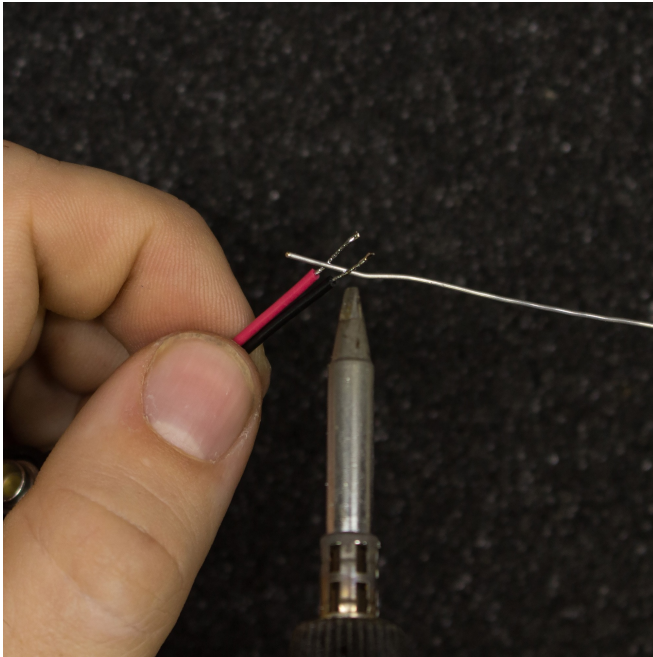
7. Remove the protective film from the sticky pads on the “antennae” of the circuit board and **place the inductors** as pictured. Solder them in.

8. Prepare your **LED**. If you want it to appear as on the photos (as a city light above the street), shape it as pictured. Be careful about the polarity - longer lead is ⊕ (positive).

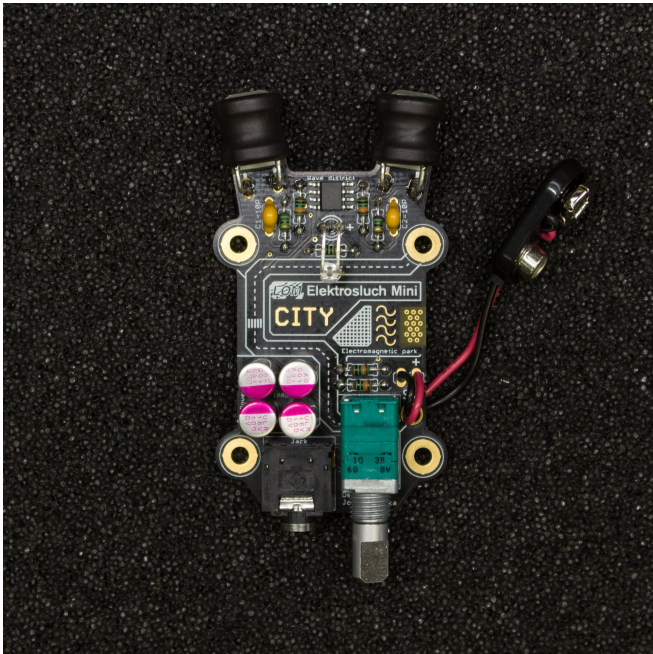


9. Solder in the **LED**.

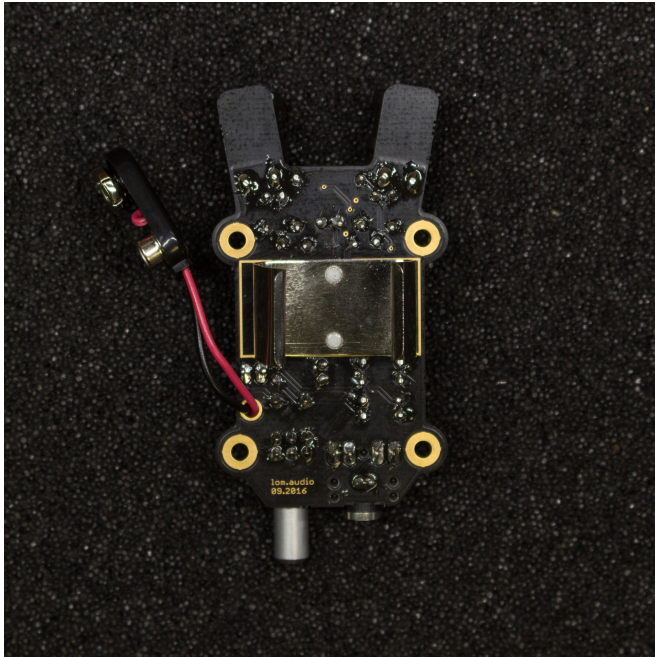
10. (Optional) Pre-tin the leads of the battery connector with solder.



11. Pull the wires through the hole next to the potentiometer as pictured and solder them in. This will act as a strain relief for the connection. The red lead goes to the plus and black to the minus.



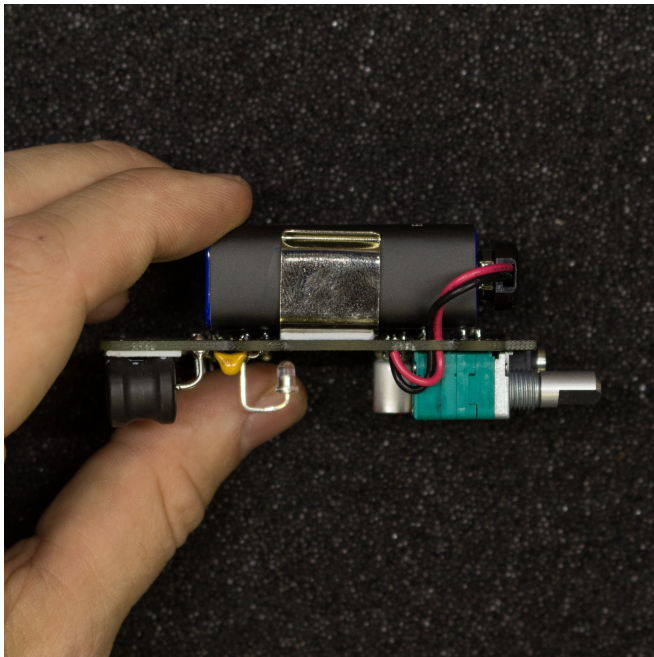
12. **Now it is time to attach the battery holder to the bottom.** Make sure that leads are cut as short as possible, so they won't make accidental contacts with the holder. Use the tape to attach the holder as pictured.



13. Cover the battery with attached LOM sticker. This protects from parts on the board accidentally shorting on the battery metallic body.

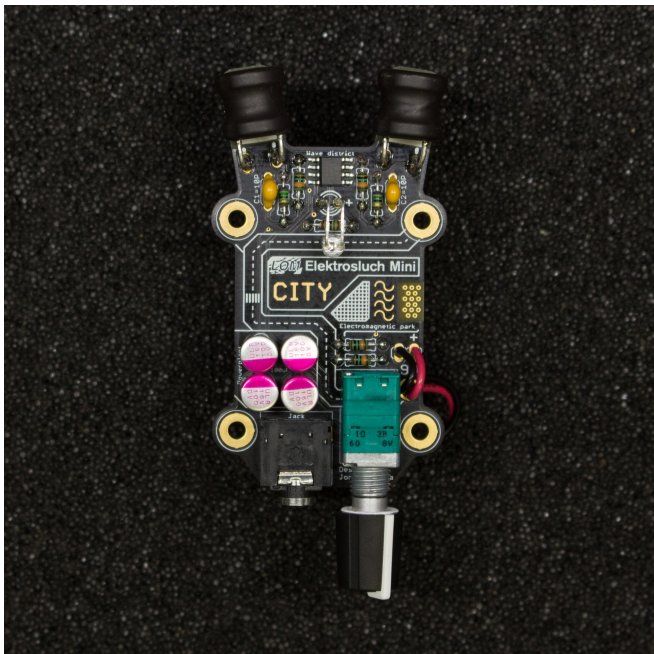
14. **Check one more time if all the polarities (capacitors, battery connector, battery) are correct.** Reversing the polarity might irreversibly damage the circuit. Check whether the extended leads are not touch/scratchign the battery when placed in the holder. Attach the battery and turn on the device with the potentiometer (it has a built-in switch!).

This is how it should look from the side.

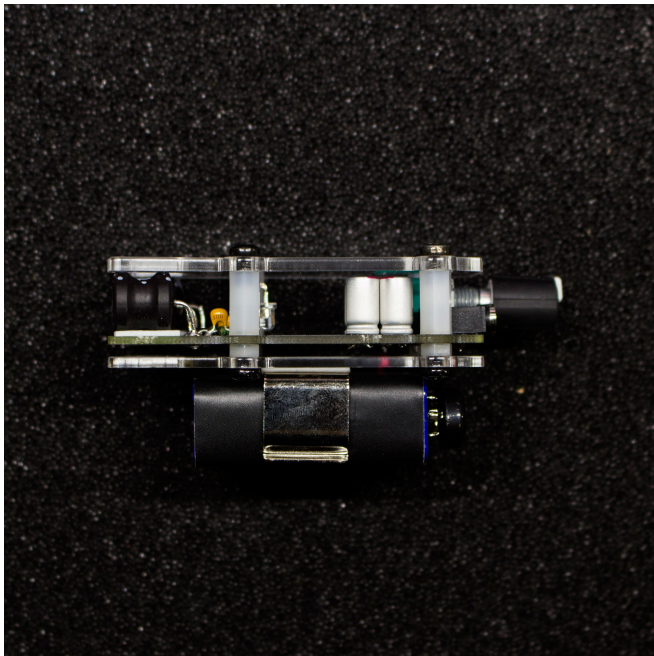
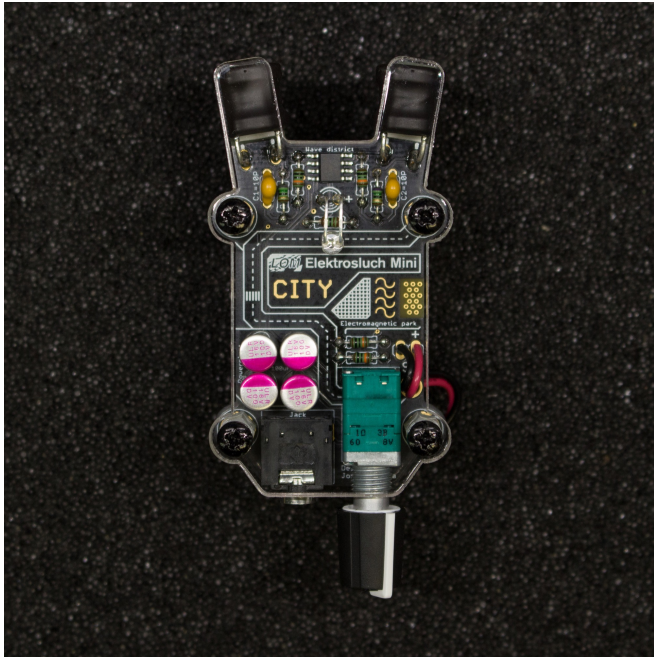


15. Put the **knob** on the potentiometer. It requires a bit of pressure, make sure you're holding the pot and pressing it against it, not against the whole device.

Check whether the LED lights up. Plug-in your headphones, turn the potentiometer almost all the way up and **listen if you can hear the buzzing and humming of the electricity** around you from both channels.

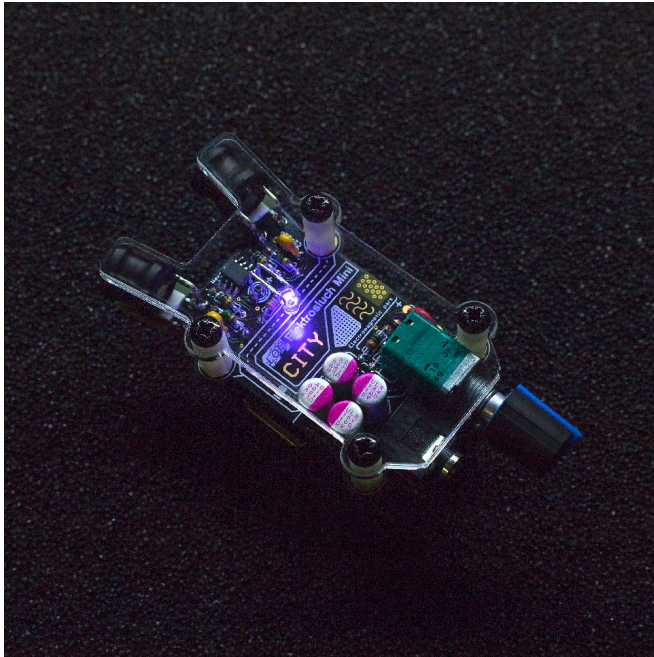


16. Attach the **front cover** using the 8 screws and 4 stand-offs. The front cover has a plastic film on both sides for protection – peel it off for more shiny look!



17. Eleketrosluch Mini City kits shipped at the end of 2017 and onwards have **extra acrylic cover** for the bottom of the circuit board. Attach it as pictured.

18. **Voilà!** Enjoy your new Elektrosluch!



From:
<http://knowledge.lom.audio/> - **LOM knowledge base**

Permanent link:
<http://knowledge.lom.audio/guides/elektroschluchminicity?rev=1506953570>

Last update: **2017/10/02 16:12**

